

FOLLOW A HIGHER CALLING

Our Higher Income Fund invests in a diversified portfolio of high-yielding, investment grade fixed income securities. It aims to deliver superior risk-adjusted returns and regular, stable income.



Superior returns

Our dynamic process helps us identify the most attractive opportunities in the Australian multi-sector credit market and drive outperformance through market cycles.



Deeply researched

Our large investment team focuses exclusively on Australian fixed income. This depth of insight gives us an edge when building conviction in the best-returning issuers and sectors.



Lower downside risk

To minimise systemic and idiosyncratic risk and increase returns, we invest in a highly diversified floating rate, multi-sector portfolio of credit securities across the public and private sectors.

Fund objective

The Fund aims to earn higher returns than traditional fixed income by investing in a highly diversified floating rate portfolio of predominately Australian domiciled credit securities.

Investment horizon	Medium term (3–5 years)
Number of securities	Generally 150+
Securities	Bonds, loans, FRNs, RMBS, ABS, warehousing, hybrids and CDS
Inception date	October 2018
Minimum investment	\$10,000
Fees (ICR)	0.65% p.a.
Distributions	Monthly



A flexible, diversified strategy with a dynamic asset allocation approach that adapts to changing market conditions.



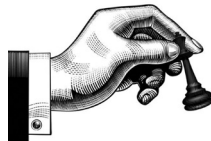
How we invest

We take advantage of market inefficiencies by finding the relative value between securities and seeking out higher risk-adjusted returns across cycles.



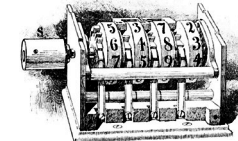
Actively managed to add value

Applying a fundamental and research-driven investment approach, utilising quantitative and qualitative techniques, helps us systematically uncover and exploit sources of value.



Disciplined approach

We complete relative value analysis on every potential investment. Our comprehensive credit risk modelling ensures we continuously assess risk versus return to deliver optimal outcomes.

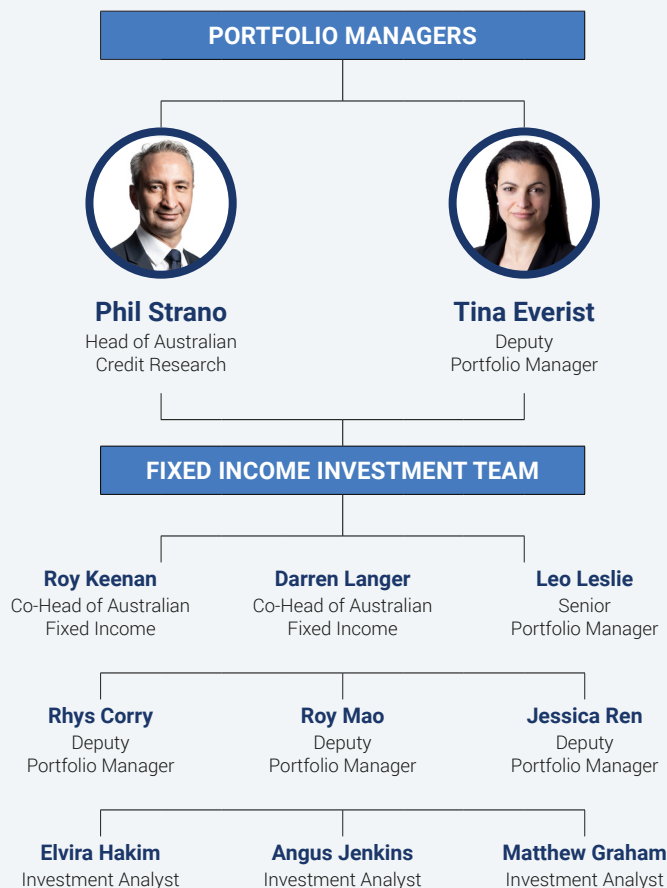


Proven, repeatable process

Our experienced team employs a disciplined and repeatable investment process, incorporating assessment of ESG factors, backed by leading technologies and proprietary tools.

Meet the team

Portfolio manager Phil Strano leads the Fund, supported by a 29-strong research and investment team, which has over 19 years' average industry experience. The team covers fixed interest, equities, macro and strategy, and ESG.



About us

Yarra Capital Management is a leading independent, active Australian fund manager with a strong heritage in the local market.

With approximately \$20 billion of AUM¹, we have an established track record in all market conditions.

We offer a range of actively managed fundamental equities, fixed income and multi-asset solutions, and our Australian equity funds span large cap through to microcap strategies.

Discover more at yarracm.com

Contact us

1800 034 494

Find your [nearest BDM](#)





1. As at 31 March 2026.

This material is distributed by Yarra Funds Management Limited (ABN 63 005 885 567, AFSL 230 251) and is intended for viewing only by wholesale clients for the purposes of section 761G of the Corporations Act 2001 (Cth). This document may not be distributed to retail clients in Australia (as that term is defined in the Corporations Act 2001 (Cth)) or to the general public. This document may not be reproduced or distributed to any person without the prior consent of Yarra Funds Management Limited. The information set out has been prepared in good faith and while Yarra Funds Management Limited and its related bodies corporate (together, the "Yarra Capital Management Group") reasonably believe the information and opinions to be current, accurate, or reasonably held at the time of publication, to the maximum extent permitted by law, the Yarra Capital Management Group: (a) makes no warranty as to the content's accuracy or reliability; and (b) accepts no liability for any direct or indirect loss or damage arising from any errors, omissions, or information that is not up to date. No part of this material may, without the Yarra Capital Management Group's prior written consent be copied, photocopied, duplicated, adapted, linked to or used to create derivative works in any form by any means.

To the extent that this document discusses general market activity, industry or sector trends, or other broad based economic or political conditions, it should be construed as general advice only. Past performance is not an indication of, and does not guarantee, future performance. Past performance does not guarantee future results, which may vary. The value of investments and the income derived from investments will fluctuate and can go down as well as up. A loss of principal may occur. There is no guarantee that objectives will be met. To the extent it includes references to specific securities, those references do not constitute a recommendation to buy, sell or hold such security. Yarra Funds Management Limited believes that the information contained in this document is correct and that any estimates, opinions, conclusions or recommendations contained in this document are reasonably held or made as at the time of publication.

There can be no assurance that any targets stated in this document can be achieved. Please be advised that any targets shown are subject to change at any time and are current as of the date of this document only. Targets are objectives and should not be construed as providing any assurance or guarantee as to the results that may be realized in the future from investments in any asset or asset class described herein. If any of the assumptions used do not prove to be true, results may vary substantially. These targets are being shown for informational purposes only. Whilst we seek to design portfolios which will reflect certain risk and return features such as sector weights and capitalization ranges, by accepting the document as a wholesale client you are taken to understand that such characteristics of the portfolio, as well as its volatility, may deviate to varying degrees from those of the benchmark.

For distribution only to financial institutions, financial services licensees and their advisers. Not for viewing by retail clients or members of the general public. © 2026 Yarra Capital Management.