

GOOD THINGS COME IN SMALL PACKAGES

Our Global Small Companies Fund aims to deliver superior returns and optimise growth by investing in a diverse and balanced portfolio of small companies with big futures.



Unique alpha

The Fund leverages AI technology and alternative data to systematically source unique alpha opportunities in a diverse global universe of more than 7,500 smaller companies.



Strong outperformance

It has outperformed its benchmark World Small Cap Index over 1, 3, 5 and 10 years¹. Knowing more, seeing better and acting faster helps deliver a superior risk return profile.



Vast experience

Our partner, Goldman Sachs Asset Management Quantitative Investment Strategies (QIS) is one of the oldest and largest quantitative investing platforms. They manage over \$3.6 billion in our small-cap strategy².

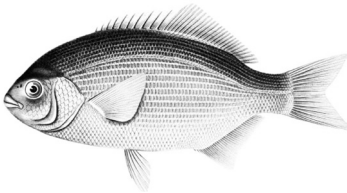
Fund objective

To achieve medium-to-long term capital growth through exposure to small companies globally. The aim is to outperform the MSCI World Small Cap Index net of dividend withholding taxes, measured in A\$ over rolling three-year periods.

Benchmark	MSCI World Small Cap Index net of dividend withholding taxes (\$A)
Investment horizon	Long term (5–7+ years)
Number of securities	Generally 350–750
Inception date	November 1999 ³
Minimum investment	\$50,000
Fees (ICR)	1.25% p.a.
Distribution	Semi-annually



Our technology infrastructure allows us to cover a vast sea of information critical to forming insight and investment decisions on a superior scale.



How we invest

Drawing on diverse datasets, we apply advanced analytics such as machine learning to extract insights and trends. Our portfolio managers overlay qualitative research techniques before they are included in the investment model. Backtesting ensures insights make sense both intuitively and quantitatively. This combination of qualitative and quantitative analysis leads to differentiated returns.



Identify high quality

We focus on companies generating high-quality revenues with sustainable business models and aligned management incentives.



Unearth trends

Global markets are increasingly driven by themes and trends. We use alternative data sources as our lens into trends impacting companies that other investors may not be seeing.



Find unrealised value

Our analysis helps us identify fundamentally undervalued companies. We believe that buying high-quality businesses at a fair price leads to strong long-term performance.

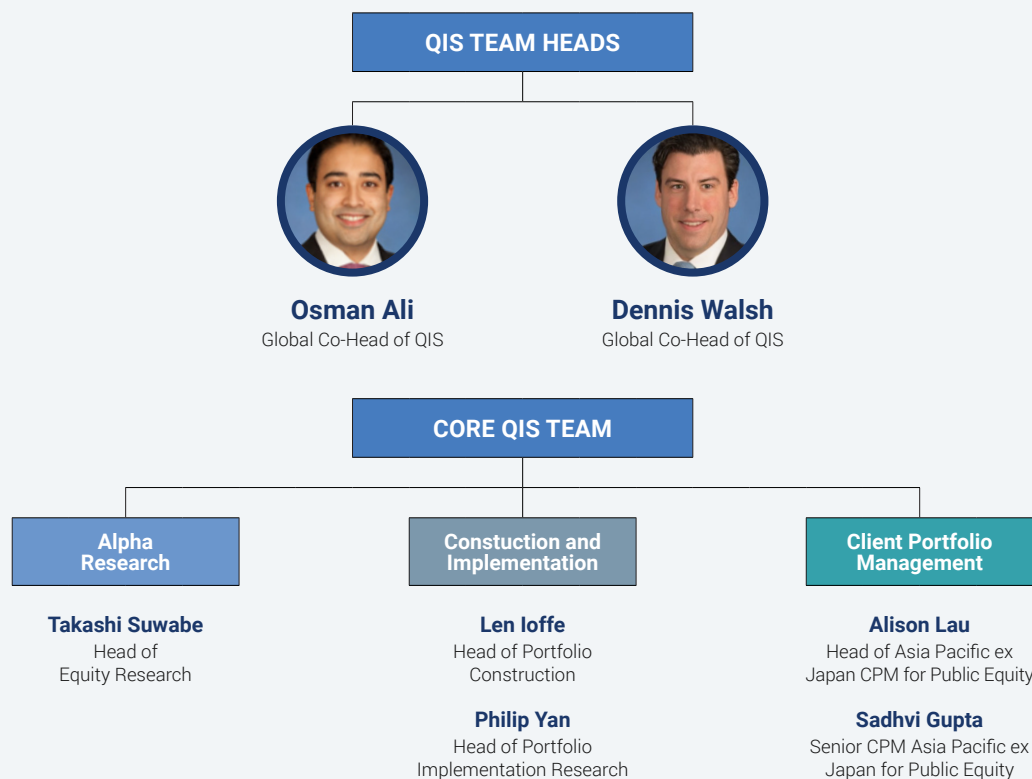


Leverage global insight

We recognise that other market participants can provide valuable information to supplement our own analysis. Exploring broader market sentiment helps us gain insight into future performance.

Goldman Sachs Asset Management

The experienced QIS team of around 200 investment professionals provides world-leading capabilities in research, portfolio construction and implementation, client portfolio management, trading, engineering, stewardship and ESG.



About us

Yarra Capital Management is a leading independent, active Australian fund manager with a strong heritage in the local market.

With \$20 billion of AUM¹, we have an established track record of consistent performance in all market conditions.

We offer a range of actively managed fundamental equities, fixed income and multi-asset solutions, and our Australian equity funds span large cap through to microcap strategies.

Discover more at yarracm.com

Contact us

+61 2 8072 6300

Find your [nearest BDM](#)





1. As at 30 June 2025. 2. As at 30 April 2025. 3. The Fund launched in 1999 and has been managed by Goldman Sachs Asset Management since 2016.

This material is distributed by Yarra Funds Management Limited (ABN 63 005 885 567, AFSL 230 251) and is intended for viewing only by wholesale clients for the purposes of section 761G of the Corporations Act 2001 (Cth). This document may not be distributed to retail clients in Australia (as that term is defined in the Corporations Act 2001 (Cth)) or to the general public. This document may not be reproduced or distributed to any person without the prior consent of Yarra Funds Management Limited. The information set out has been prepared in good faith and while Yarra Funds Management Limited and its related bodies corporate (together, the "Yarra Capital Management Group") reasonably believe the information and opinions to be current, accurate, or reasonably held at the time of publication, to the maximum extent permitted by law, the Yarra Capital Management Group: (a) makes no warranty as to the content's accuracy or reliability; and (b) accepts no liability for any direct or indirect loss or damage arising from any errors, omissions, or information that is not up to date. No part of this material may, without the Yarra Capital Management Group's prior written consent be copied, photocopied, duplicated, adapted, linked to or used to create derivative works in any form by any means.

To the extent that this document discusses general market activity, industry or sector trends, or other broad based economic or political conditions, it should be construed as general advice only. Past performance is not an indication of, and does not guarantee, future performance. Past performance does not guarantee future results, which may vary. The value of investments and the income derived from investments will fluctuate and can go down as well as up. A loss of principal may occur. There is no guarantee that objectives will be met. To the extent it includes references to specific securities, those references do not constitute a recommendation to buy, sell or hold such security. Yarra Funds Management Limited believes that the information contained in this document is correct and that any estimates, opinions, conclusions or recommendations contained in this document are reasonably held or made as at the time of publication.

There can be no assurance that any targets stated in this document can be achieved. Please be advised that any targets shown are subject to change at any time and are current as of the date of this document only. Targets are objectives and should not be construed as providing any assurance or guarantee as to the results that may be realized in the future from investments in any asset or asset class described herein. If any of the assumptions used do not prove to be true, results may vary substantially. These targets are being shown for informational purposes only. Whilst we seek to design portfolios which will reflect certain risk and return features such as sector weights and capitalization ranges, by accepting the document as a wholesale client you are taken to understand that such characteristics of the portfolio, as well as its volatility, may deviate to varying degrees from those of the benchmark.

For distribution only to financial institutions, financial services licensees and their advisers. Not for viewing by retail clients or members of the general public. © 2025 Yarra Capital Management.