

## Yarra Australian Equities Fund

Rating issued on 26 Jun 2025 | APIR: JBW0009AU

### Investment objective

To outperform the S&P/ASX 200 Accumulation Index (after fees) over rolling three-year periods. Internally, Yarra seeks to outperform the S&P/ASX 200 Accumulation Index by 2.5% p.a. (before fees) over the same time frame.

Manager	Yarra Capital Management Group
Distributor	Yarra Capital Management Group
Sector	Australian Shares \ Large Companies
Investment Style	Fundamental
Equity Style	Neutral
RI Classification	Integrated
Absolute Risk	High
Relative Risk	Active - Benchmark Aware
Investment Timeframe	7+ Years
Zenith Benchmark	S&P/ASX 300 (Accum)
Min Investment Amount	\$10,000
Redemption Frequency	Daily
Income Distribution	Half Yearly
Fund Size (30 May 2025)	\$129.70M
Management Cost	0.80% p.a. Incl. GST
Performance Fee	N/A
Buy / Sell Spread	0.15% / 0.15%
Inception Date	01 Jul 2007

### Fund facts

- Relatively concentrated portfolio, holding between 30 and 55 stocks (typically 35)
- Portfolio turnover expected to average 20% p.a. to 30% p.a. over a market cycle

### Viewpoint

The Fund, managed by Melbourne-based Yarra Capital Management (Yarra), provides investors with a style-neutral, fundamentally driven exposure to Australian equities. Zenith considers the Fund to be an attractive offering, highlighting a sustained period of improved investment outcomes that we believe has been underpinned by a greater focus on investments by portfolio manager Dion Hershan.

Yarra was established in 2017 following the management buyout of Goldman Sachs Asset Management's Australian-focused investment capabilities, backed by private equity group TA Associates. Yarra's senior management owns 40% of the equity in the firm, with TA Associates owning 40% and Nikko Asset Management owning 20%.

Hershan is ultimately responsible for the management of the Fund, with support provided by Marcus Ryan. Zenith believes Hershan and Ryan have complementary skill sets, having worked together for an extended period of time. In addition, Zenith notes that Hershan relinquished his managing director duties for the business in August 2021, which we view positively.

Primarily based in Melbourne, the Australian equities team comprises 19 members, led by Hershan, who is directly supported by Katie Hudson. Zenith believes Hershan and Hudson have the requisite experience to manage the investment team. All members of the investment team have research responsibilities that are divided across sector lines. Zenith believes the investment team is sufficiently resourced and experienced to manage the Fund.

Yarra's investment process is premised on the belief that equity markets are inefficient and that asset prices do not always reflect their intrinsic value. To exploit these market inefficiencies, Yarra seeks to develop unique insights and adopts a longer-term investment horizon. Zenith believes Yarra's investment process is well structured.

The portfolio construction process aims to produce a portfolio of securities with payoffs spread across multiple time horizons to improve diversification. Stocks are categorised based on Yarra's assessment of risk characteristics and expected payoffs. Zenith is comfortable with Yarra's portfolio construction approach and believes it ensures a connection between the output of its security selection process and the resultant weight of the stock in the Fund.



## Fund analysis

### Fund characteristics

Constraint	Value
Security Numbers	30 to 55 (Typically 35)
Active Sector Weight	-10% to 10% (Typically)
Active Stock Weight	-5% to 5% (Typically)
Tracking Error	2.5% p.a. to 4% p.a. (Soft limit)
Cash	Max: 10% (Soft limit)

### Investment objective and philosophy

Yarra seeks to outperform the S&P/ASX 200 Accumulation Index (after fees) over rolling three-year periods. Internally, Yarra seeks to outperform the S&P/ASX 200 Accumulation Index by 2.5% p.a. (before fees) over the same time frame.

Yarra's investment process is premised on the belief that equity markets are inefficient and that asset prices do not always reflect their intrinsic value. To exploit these market inefficiencies, Yarra seeks to develop unique insights and adopts a longer-term investment horizon.

Yarra believes the Australian market is extremely narrow, with little differentiation between value and growth securities. As such, Yarra seeks to be opportunistic, preferring to have the ability to oscillate between value and growth securities.

### Portfolio applications

In general, compared to most other asset classes, equities offer investors the opportunity for higher capital growth over the longer term with some income. However, this higher growth is also often associated with higher volatility. Therefore, it is recommended that investors adopt a longer time frame when investing in equities.

Investors should also be cognisant of the fact that the Australian equity market is relatively concentrated, with the Materials and Financials sectors dominating the market. The market also only represents approximately 2% of global equity markets (in terms of market capitalisation). Therefore, to mitigate this concentration risk it is highly recommended that investors diversify their investments across asset classes, both domestically and globally.

Given its style neutral approach, Zenith believes the Fund could be held as a core exposure to the Australian equities sector for investors with low investment amounts. However, Zenith believes the Fund may also be blended with other style-neutral, value and/or growth-orientated Australian equities products to achieve a more diversified exposure to the sector.

The Fund's portfolio turnover is expected to average 20% p.a. to 30% p.a. over a market cycle, which Zenith considers to be low. Yarra has indicated that approximately 70% of the expected turnover is attributed to resizing existing positions and approximately 30% is due to initiating and closing positions. Given this expected level of turnover, the majority of the Fund's returns are expected to be delivered via capital appreciation in the unit price, rather than through the realisation of capital gains in income distributions. In addition, realised capital gains are

highly likely to be eligible for the capital gains tax discount. As such, holding all else equal, the Fund may be more appealing to investors who are high marginal tax rate payers as it may result in superior after-tax return outcomes.

### Fund responsible investment attributes

Key Information	Description
Zenith RI classification*	Integrated
Has Responsible Investment Policy	Yes
Negative screens**	Full/Partial
Fossil fuels	Partial
Adult Entertainment	Full
Tobacco	Partial
Human rights abuse	Full
Environmental Degradation	Full
Other Measures	Conflict Zone Investing (Full), Detention or Incarceration (Full), Drift Net or Trawl Fishing (Full), Palm Oil (Full), Predatory Lending (Full), Thermal Coal (Partial)
PRI Status	
PRI Signatory	Yes

\*Zenith RI Classification scale:

- Traditional
- Aware
- Integrated
- Thematic
- Impact

\*\*Data has been supplied by third parties. While such information is believed to be accurate, we do not accept responsibility for any inaccuracy in such data.



## Absolute performance

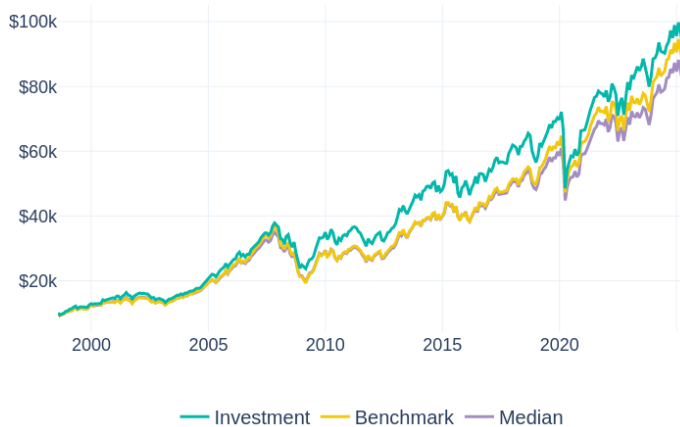
Performance as at 31 May 2025

### Monthly performance history (% , net of fees)

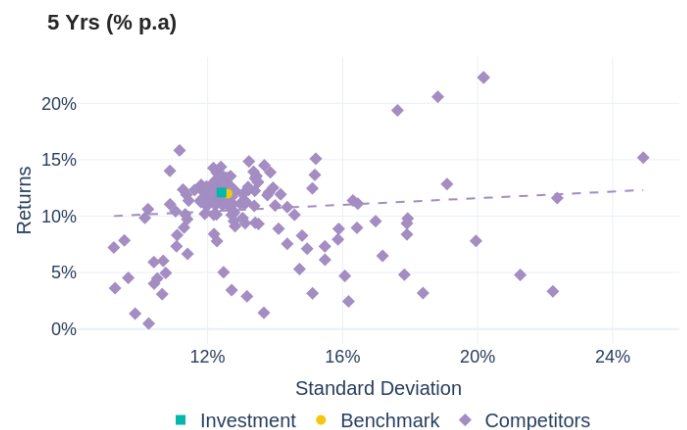
	Jan	Feb	Mar	Apr	May	Jun	Jul	Aug	Sep	Oct	Nov	Dec	YTD	BM YTD*
2025	4.41%	-2.49%	-3.52%	2.14%	4.39%								4.74%	4.87%
2024	0.30%	1.49%	3.88%	-2.89%	-0.50%	-0.21%	2.71%	1.18%	3.72%	-2.39%	4.21%	-3.41%	7.99%	11.37%
2023	5.76%	-1.44%	2.24%	2.45%	-1.57%	1.45%	2.93%	-2.58%	-3.43%	-4.13%	3.82%	6.72%	12.13%	12.13%
2022	-4.43%	1.84%	5.47%	-1.58%	-2.63%	-8.46%	5.38%	2.34%	-6.85%	7.09%	6.54%	-2.91%	0.22%	-1.76%
2021	0.17%	2.68%	3.93%	2.58%	2.40%	2.58%	0.50%	2.06%	-0.71%	-0.35%	-1.25%	2.60%	18.46%	17.55%

\*S&P/ASX 300 (Accum)

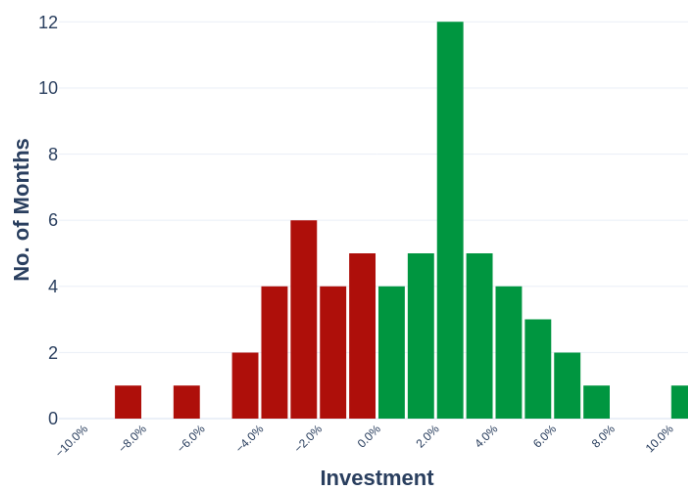
### Growth of \$10,000



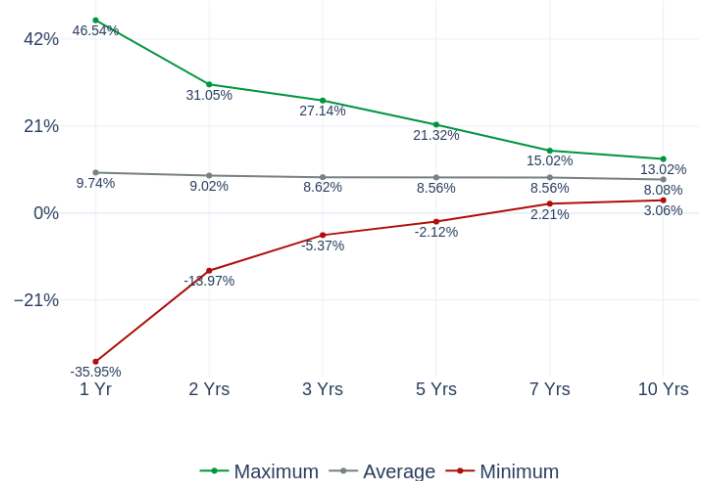
### Risk / return



### Monthly histogram



### Minimum and maximum returns (% p.a.)





## Absolute performance analysis

Instrument	1 Yr	3 Yrs	5 Yrs	10 Yrs	Inception
<b>Investment</b>	<b>10.69%</b>	<b>8.91%</b>	<b>12.09%</b>	<b>6.56%</b>	<b>8.96%</b>
Income	3.17%	6.62%	10.59%	8.86%	8.69%
Growth	7.52%	2.29%	1.50%	-2.31%	0.28%
<b>Benchmark</b>	<b>13.16%</b>	<b>9.33%</b>	<b>11.99%</b>	<b>8.10%</b>	<b>8.75%</b>
<b>Median</b>	<b>11.90%</b>	<b>8.57%</b>	<b>11.51%</b>	<b>7.34%</b>	<b>8.44%</b>
<b>Cash</b>	<b>4.42%</b>	<b>3.79%</b>	<b>2.28%</b>	<b>2.02%</b>	<b>3.86%</b>

## Ranking within sector (p.a.)

Ranking within Sector	1 Yr	2 Yrs	3 Yrs	5 Yrs
Fund Ranking	97 / 167	117 / 160	79 / 158	56 / 149
Quartile	3rd	3rd	2nd	2nd

## Absolute risk

Instrument	1 Yr	3 Yrs	5 Yrs	10 Yrs	Inception
<b>Standard Deviation (% p.a.)</b>					
Investment	10.48%	13.32%	12.41%	15.67%	13.86%
Benchmark	10.68%	13.41%	12.59%	13.97%	13.27%
Median	10.47%	12.73%	11.96%	13.47%	12.62%
<b>Downside Deviation (% p.a.)</b>					
Investment	5.99%	8.40%	7.12%	11.71%	9.67%
Benchmark	6.05%	8.41%	7.47%	9.95%	9.16%
Median	6.08%	8.09%	7.07%	9.68%	8.67%

## Absolute risk/return ratios

Instrument	1 Yr	3 Yrs	5 Yrs	10 Yrs	Inception
<b>Sharpe Ratio (p.a.)</b>					
Investment	0.60	0.38	0.79	0.29	0.37
Benchmark	0.82	0.41	0.77	0.44	0.37
Median	0.71	0.38	0.77	0.39	0.36
<b>Sortino Ratio (p.a.)</b>					
Investment	1.05	0.61	1.38	0.39	0.53
Benchmark	1.44	0.66	1.30	0.61	0.53
Median	1.23	0.59	1.31	0.55	0.53

For consistency purposes, Zenith benchmarks all products categorised within our Australian Shares - Large Companies sub-asset class against the S&P/ASX 300 Accumulation Index. Accordingly, all performance and risk measurements are calculated with the Zenith assigned index. However, Yarra benchmarks itself against the S&P/ASX 200 Accumulation Index. Over the long term, Zenith expects any difference in performance between these two indices to be nominal.

Zenith notes that the performance data of the Fund's strategy prior to January 2017 is reflective of the strategy under the GSAM branding (APIR: JBW0009AU).

Zenith also notes that Dion Hershan assumed portfolio management responsibilities for the Fund in July 2007.

All commentary below is as at 31 May 2025.

Yarra seeks to outperform the S&P/ASX 200 Accumulation Index (after fees) over rolling three-year periods. Internally, Yarra seeks to outperform the S&P/ASX 200 Accumulation Index by 2.5% p.a. (before fees) over the same time frame.

The Fund has failed to achieved its formal objective over the most recent three-year period.

The Fund's risk (as measured by Standard Deviation) has been higher than that of the benchmark since inception.

The Fund's Sharpe Ratio has been broadly in line with the benchmark over the long term, which indicates that it has achieved similar risk/return outcomes.

Investors should be aware that Yarra does not target a specific level of income for the Fund, with distributions made semi-annually where possible.



## Relative performance

### Excess returns

Statistic	1 Yr	3 Yrs	5 Yrs	10 Yrs	Inception
Excess Return	-2.47%	-0.42%	0.10%	-1.55%	0.21%
Monthly Excess (All Mkts)	41.67%	50.00%	48.33%	46.67%	47.20%
Monthly Excess (Up Mkts)	50.00%	50.00%	45.00%	47.44%	46.60%
Monthly Excess (Down Mkts)	25.00%	50.00%	55.00%	45.24%	48.28%

### Capture ratios (% p.a.)

Statistic	1 Yr	3 Yrs	5 Yrs	10 Yrs	Inception
Downside Capture	102.51%	96.02%	93.32%	107.82%	97.98%
Upside Capture	91.94%	95.79%	96.74%	98.81%	99.55%

### Tracking error (% p.a.)

Instrument	1 Yr	3 Yrs	5 Yrs	10 Yrs	Inception
Investment	3.05%	3.21%	3.19%	4.04%	3.75%
Median	0.69%	1.06%	1.21%	1.15%	1.52%

### Information ratio

Instrument	1 Yr	3 Yrs	5 Yrs	10 Yrs	Inception
Investment	-0.81	-0.13	0.03	-0.38	0.06
Median	-1.84	-0.72	-0.39	-0.66	-0.21

### Beta statistics

Statistic	1 Yr	3 Yrs	5 Yrs	10 Yrs	Inception
Beta	0.94	0.96	0.95	1.09	1.01
R-Squared	0.92	0.94	0.94	0.94	0.93
Correlation	0.96	0.97	0.97	0.97	0.96

All commentary below is as at 31 May 2025.

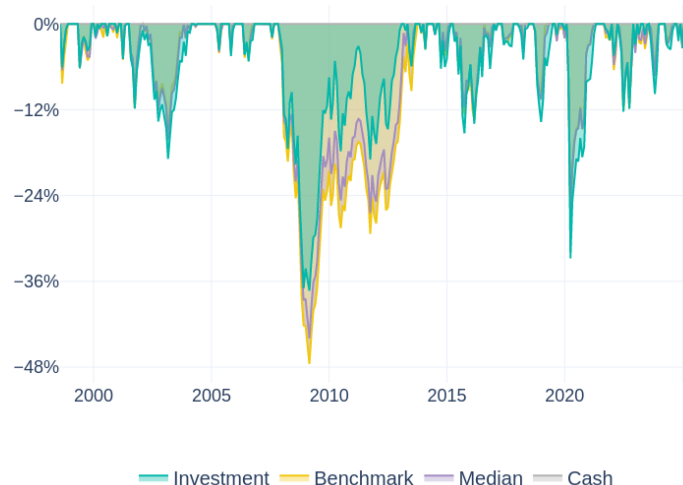
Zenith seeks to identify strategies that can outperform in over 50% of months in all market conditions, as we believe this represents consistency of manager skill. In addition, we view a strategy's ability to produce stronger upside capture ratios relative to downside capture ratios as an attractive feature.

Yarra has achieved the latter objective since inception. In addition, we note that the Fund has typically achieved a stronger level of outperformance consistency in declining markets, which we believe is consistent with the investment process' focus on quality.

The Fund's Tracking Error has been within the targeted range of 2.5% p.a. to 4% p.a. since inception.

### Drawdown analysis (since inception)

Drawdown analysis assesses the relative riskiness of a Fund versus the benchmark, in reference to capital preservation. The maximum Drawdown is recorded as the percentage decline in the value of a portfolio from peak to trough (before a new peak is achieved). All Drawdown analysis is calculated commencing from the inception date of the Fund in question, and Drawdown analysis for the Fund and benchmark(s) are calculated independently. That is, the largest drawdown for the Fund and benchmark(s) will not always refer to the same time period.



All commentary below is as at 31 May 2025.

The Fund's drawdowns have generally been similar to those of the benchmark. However, we note that the Fund's drawdown during the COVID-19 period was more prominent than the benchmark, which we consider to be a disappointing outcome.



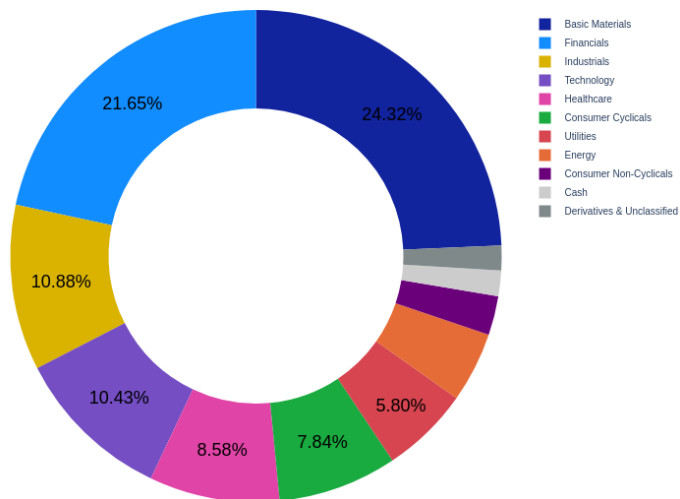
## Product exposures

### Holdings as at 31 Mar 2025

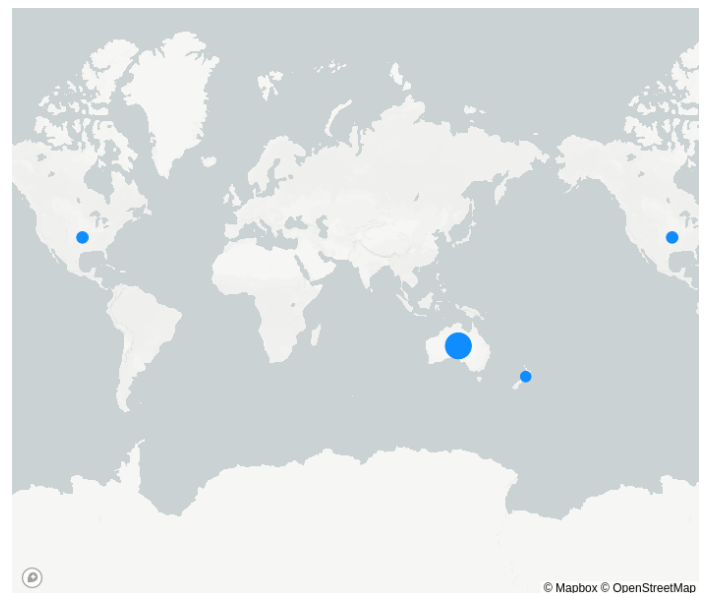
#### Top 10 holdings

Stock	Weight	Country	Sector	Active Exposure
BHP Group Ltd	9.70%	Australia	Basic Materials	1.73%
Commonwealth Bank of Australia	7.75%	Australia	Financials	-2.63%
Westpac Banking Corporation	5.96%	Australia	Financials	1.50%
Woodside Energy Group Ltd	4.62%	Australia	Energy	2.82%
Transurban Group	4.40%	Australia	Industrials	2.69%
ResMed	3.75%	United States	Healthcare	2.90%
QBE Insurance Group	3.55%	Australia	Financials	2.20%
Northern Star Resources	3.25%	Australia	Basic Materials	2.39%
Xero	3.23%	New Zealand	Technology	2.32%
Origin Energy	3.01%	Australia	Utilities	2.27%
Total	49.22%			

#### Equity sector exposure



#### Equity country exposure





## Fund commentary

### Fund risks

Zenith has identified the following key risks of the Fund. Although Zenith believes the risks noted are all significant, we have listed them in order of importance. In addition, we have not intended to highlight all possible risks.

**Key person risk:** Zenith considers key person risk to be high at Yarra and believes the departure of Hershan would be a material loss, triggering an immediate review of our rating on the Fund. However, we highlight Hershan's meaningful equity stake in Yarra, which Zenith believes aligns him to the ongoing success of this Fund and broader business. In addition, Zenith notes that Yarra has taken steps to plan for succession with Ryan, who currently acts in a deputy portfolio management capacity.

**Capacity risk:** Zenith believes that high levels of funds under management (FUM) can potentially inhibit Yarra's ability to efficiently trade the portfolio, thereby limiting outperformance potential. As at 31 May 2025, Yarra managed approximately \$A 7.2 billion in Australian equities.

Yarra has advised that the indicative firmwide capacity limit for Australian equities is approximately 0.60% of the market capitalisation of the S&P/ASX 200 Index (approximately \$A 15 billion as at 31 May 2025), at which point the Fund would be soft closed to new investors. Given the current level of FUM, Zenith does not consider capacity to be an issue.

**Focus risk:** Given that Hershan serves as Yarra's chairman and has portfolio management responsibilities for multiple strategies, Zenith believes his focus on this Fund may be diluted. As such, we will closely monitor for any impact this may have on excess return generation.

### Security/asset selection

The Fund's investment universe comprises securities listed on the S&P/ASX 300 Index. The initial universe is reduced to a more manageable size through the application of a liquidity filter that removes securities that would take more than 30 days to liquidate from the Fund, based on an average daily turnover and position size in the portfolio. It is anticipated that the liquidity filter will remove securities with a market capitalisation of less than \$A 500 million.

Unlike many peers, Yarra does not apply further quantitative screens designed to highlight companies that rank favourably based on standard financial ratios. Analysts are responsible for the coverage of all companies within their respective sectors, with companies being placed into the following categories:

- High Impact: Securities held in Yarra's portfolios or representing a significant portion of the benchmark index.
- High Interest Stocks that have the potential to be included in the portfolio.
- Watch List: Securities that are not an immediate priority, however, are monitored and have the potential to be included in the portfolio.

Securities will be placed in the 'High Interest' and 'Watch List' categories if analysts believe they can identify unique company insights that would provide Yarra with a differentiated view relative to the market. Insights are developed through company, value chain, and broader industry analyses. Throughout this process, Hershan and Hudson provide close oversight to ensure that analysts utilise their time efficiently. Yarra's investment team is expected to conduct approximately 2,500 company meetings per year. The team will also engage with brokers to understand the market's expectations for specific industries and companies.

The investment team places a strong emphasis on seeking out investment ideas that have not yet been identified by the market. Analysts will actively engage with company management, competitors, suppliers and customers to gain a heightened understanding of the factors impacting the market.

Idea generation and individual analyst research agendas are driven by Hershan and Hudson, who meet analysts at least weekly to discuss their upcoming agenda. Zenith believes that by actively seeking investment opportunities that are yet to be recognised by the market, the Fund is well-positioned to capitalise on changing market dynamics.

Zenith views the active engagement of analysts with a variety of industry participants favourably and believes this approach provides analysts with a deeper understanding of industry dynamics.

When developing a company's valuation, analysts will consider a range of valuation methodologies including discounted cash flow analysis, free cash flow yields, price/earnings ratio, and other industry-specific valuation methods. Analysts apply a discounted cash flow model across all industries, with further valuation methodologies determined based on the industry in which a company operates.

Yarra also incorporates environmental, social and governance (ESG) considerations into its research effort. The identification of ESG issues can be reflected in a company's valuation, and where ESG issues are deemed to be significant, can preclude the company from potential investment.

The output of the research process is a one-page investment thesis articulating the valuation, risks and catalysts of a company. This analysis facilitates a peer-review process occurring during the morning and portfolio meetings. An important and differentiating aspect of the research output is the categorisation of securities into different payoff horizons (internally referred to as phases):

- Phase 1: High degree of visibility around earnings and key events - expected payoff in six to twelve months.
- Phase 2: Supportive industry and company trends, however no definitive near-term catalysts - expected payoff in one to three years.
- Phase 3: Clear value opportunity, however no insight or certainty in near-term financials - expected payoff uncertain.

The segregation of the investment universe based on expected payoff horizons enables the team to consider mispricing opportunities across varying investment timeframes, to assist in capturing the inefficiencies created by the short-term focus of many market participants.



Overall, Zenith believes Yarra's standardised approach to security analysis is intuitive and results in a consistent and detailed framework to identify ideas.

### Responsible investment approach

Yarra has an established Responsible Investment Policy, last updated in March 2024. To be in line with industry best practice, Zenith believes Yarra's Responsible Investment Policy should be reviewed every 12 months, at a minimum, to reflect the constantly evolving nature of responsible investing.

Erin Kuo, Yarra's Chief Sustainability Officer, has over 15 years' experience within sustainability investing and works closely with Yarra's investment teams to support ESG integration into investment processes. Zenith views Kuo's appointment positively.

Further to the Fund's environmental, social and governance (ESG) screens, Yarra takes an active approach to ESG issues. ESG is evaluated as part of the team's fundamental analysis process, with analysts including an ESG score in each company's written assessment. Implications of material ESG issues are included in the valuation of each company, typically through added operating expenses or an increase in a company's weighted average cost of capital. Where ESG issues are deemed to be significant, they may preclude a company from investment.

Zenith believes that this qualitative analysis of a company's operations is crucial on a forward basis, given that a company's performance with regards to ESG considerations is increasingly being reflected in its share price. Overall, Zenith is comfortable with Yarra's approach to ESG.

### Portfolio construction

In constructing the portfolio, Hershman and Ryan seek to create a balance across investment styles (value and growth) and investment timeframes, believing that stock-specific insights drive investment outcomes and should be capable of delivering outperformance across the full market cycle.

Portfolio construction and position sizing are driven by Hershman and Ryan, who draw on the fundamental research process conducted by the analysts, with Hershman having ultimate authority.

Yarra places a significant emphasis on risk and, as a result, Hershman and Ryan seeks to diversify the portfolio such that no single factor dominates the investment outcome. Particular emphasis is given to liquidity, the nature of the insight, portfolio interaction and management quality.

Stocks are categorised based on Yarra's assessment of risk characteristics and expected payoff. A stock's risk is defined as low, medium or high, with expected payoff categories of 10%, 20% or 30%. The lowest active weight is between 0% and 2% for a security with low risk and low payoff, or high risk and high payoff. The largest active position of greater than 4% is for companies assessed as having high payoff with low risk.

Zenith has reviewed Yarra's target weighting guidelines and, whilst noting that it is not used as a direct method for determining security weights, we believe it provides a strong link to the security selection process.

The resultant portfolio is relatively concentrated, consisting of between 30 and 55 (typically 35) securities. Whilst no strict portfolio constraints exist, the portfolio is constructed such that no single stock position can drive the performance of the portfolio. Typically, active sector weights will be less than 10% and the portfolio seeks to be fully invested.

The Fund is permitted to retain cash up to 10%. Zenith believes that active managers should remain fully invested, with cash holdings kept to a minimum. However, we acknowledge that the average long-term cash allocation has been less than 5%.

Positions will be exited in the following circumstances:

- The investment thesis is invalidated
- The position becomes overvalued
- A better relative value opportunity is identified

The Fund's portfolio turnover is expected to average 20% p.a. to 30% p.a. over a market cycle, which Zenith considers to be low.

Zenith is comfortable with Yarra's portfolio construction approach and believes it ensures a connection between the output of its security selection process and the resultant weight of the stock in the Fund.

### Risk management

Consistent with its emphasis on understanding and managing the risks of the portfolio, Yarra has implemented a strict risk management framework that is present throughout the investment process.

At the portfolio construction level, risk is managed by restricting the maximum investment in high-risk securities. Yarra does not apply fixed constraints at the stock and sector level, believing that such restrictions are ineffective in accounting for the differing risk profiles of various investments. However, Yarra closely monitors stock and sector correlations to ensure that correlations between single stocks/sectors or groups of stocks/sectors do not account for a material level of risk. In monitoring the risks at the portfolio level, Hershman and Ryan will primarily consider the Tracking Error of the Fund, which is expected to be maintained between 2.5% p.a. and 4% p.a.

Yarra uses Axioma portfolio risk management to assess the portfolio's risk metrics. Whilst this highlights the Tracking Error of the portfolio, it decomposes each security's contribution to the active risk in the portfolio using different methodologies, thereby increasing Hershman and Ryan's ability to identify unintended factor exposures and risks that could impact the portfolio. Risk software is typically run daily or when dictated by changing market conditions.

Zenith considers the risk management of the Fund to be well integrated at each stage of the investment process, ensuring that the team is cognisant of the risks inherent in the Fund. However, investors should be aware that there is a significant reliance on management judgement and skill.



## Investment fees

	Fund	Sector Average
Total Fees and Costs (RG 97)	0.80% p.a.	0.75% p.a.
Management Fees and Costs	0.80% p.a.	0.67% p.a.
Transaction Costs	0.00% p.a.	0.04% p.a.
Performance fees	N/A	0.06%
Performance fees description	N/A	
Management Cost	0.80% p.a.	0.68% p.a.
Buy / Sell spread	0.15% / 0.15%	0.19% / 0.19%

All fees and costs are inclusive of GST unless indicated otherwise. The Performance Fee shown is the performance fee disclosed in the PDS. It is calculated by taking the average performance fees charged over the last five financial years (or less if the investment or performance fee mechanism has not been in place for five financial years).

The sector average management cost is based on the average management cost of all flagship Australian Shares - Large Companies products surveyed by Zenith.

Prior to October 2024, the Fund's management cost was 0.90% p.a. Zenith views the reduction in the Fund's management cost positively.

Overall, Zenith believes the Fund's fee structure is fair, relative to peers, given its stated objectives. However, we believe that investors have been insufficiently compensated by way of risk-adjusted performance given the fees paid over the past three years (ending 30 June 2024).

The fees mentioned above are reflective of the flagship version only and may differ when the product is accessed through an alternate investment vehicle such as a platform.

## About the fund manager

### Organisation

Yarra Capital Management (Yarra) is a Melbourne-based fund manager that offers a broad range of active strategies spanning Australian equities and fixed income.

Yarra was established in 2017 following the management buyout of Goldman Sachs Asset Management's Australian-focused investment capabilities and operating platform, backed by TA Associates, a global growth private equity firm with a long history of investing in funds management companies.

In April 2021, Yarra completed the acquisition of Nikko Asset Management's (Nikko AM) Australian business (now Tyndall Asset Management), with Nikko AM taking a 20% equity stake in the combined entity. This partnership enables Nikko AM's global business to gain access to Yarra's investment products, with Yarra assuming responsibility for the distribution of Nikko AM's global suite of products in the Australian market.

As at 31 May 2025, Yarra managed approximately \$A 2.9 billion in the strategy, including \$A 114 million in the Fund.

## Investment personnel

Name	Title	Industry Experience (yrs)	Tenure (yrs)	Location
Dion Hershan	Head of Australian Equities	20	18	Melbourne, Australia
Marcus Ryan	Deputy Portfolio Manager	19	19	Melbourne, Australia

Yarra's equities investment team is led by Dion Hershan. Hershan is directly supported by Katie Hudson, who is Head of Australian Equities Research. Hershan is ultimately responsible for the strategy, with support provided by Deputy Portfolio Manager, Marcus Ryan.

Hershan is highly experienced in analysing and managing portfolios of Australian equities. Prior to co-founding Yarra, Hershan was Head of Australian Equities at GSAM. During his 10 years at GSAM, he was responsible for a number of Australian equities strategies. Previously, Hershan gained investment management experience at Citadel Investment Group and Fidelity Investments. Prior to his asset management career, Hershan worked at the Boston Consulting Group where he was responsible for financial and quantitative analysis. Zenith believes Hershan is a capable investor with the requisite experience to successfully manage the Fund. In addition, Zenith notes that Hershan relinquished his managing director duties for the business in August 2021, which we view positively as it allows him to predominantly focus on investments.

Ryan is responsible for assisting Hershan in the research and portfolio construction process. Prior to joining Yarra, Ryan was an investment manager at GSAM. Zenith believes Hershan and Ryan have complementary skill sets, having worked together for an extended period of time.

Hershan and Ryan are supported by Yarra's Australian equities team, which consists of a further 17 members. All members of the investment team have research responsibilities divided across sector lines. In addition, Zenith notes that the investment team has broader research coverage across the market cap spectrum.

The team also leverages the experience and expertise of Tim Toohey, Head of Macro and Strategy and Yarra's fixed income team, in order to gain a full understanding of factors that may impact company fundamentals. Zenith believes this resource is advantageous, given the insights it can provide on macroeconomic conditions.

Team interaction occurs frequently, with the investment team meeting on a daily basis to facilitate discussions regarding the broader economy as well as individual securities. Hershan and Hudson collaborate with the investment team throughout the research process, meeting with the analysts on a weekly basis. Portfolio meetings are held fortnightly, at which time stock attribution and overall risk exposures are discussed.

Yarra's remuneration structure comprises a base salary and performance bonus. Bonuses are discretionary in nature and are determined primarily following an assessment of fund performance, analyst stock calls and broader team contribution. Bonuses are paid in cash up to a predefined threshold, above



which the balance is vested over three years to assist in staff retention. In addition, Zenith notes that the majority of the investment team holds equity in the business.

Zenith views the investment team's experience and stability favourably.

## About the sector

### Sector characteristics

The Zenith 'Australian Shares – Large Companies' sector consists of long-only strategies investing in the Australian equities asset class. The sector incorporates both benchmark-aware and benchmark-unaware strategies that focus predominantly on stocks with large market capitalisations. Additionally, the sector is one of the most competitive in the investment landscape, based on the number of managers and strategies available to investors. Zenith expects rated long-only products to outperform the passive index (after fees) over the long term.

Zenith benchmarks all funds in this sector against the S&P/ASX 300 Accumulation Index. However, many managers in this sector benchmark themselves against the S&P/ASX 200 Accumulation Index. Both indices are market-capitalisation weighted, resulting in companies with the largest market capitalisations receiving the highest weightings within the index. Over the longer term, Zenith believes there will be minimal difference between the return profiles of these indices.

The Australian equities asset class, as represented by the S&P/ASX 300 Index, is highly concentrated and narrow. Zenith considers a company to be a large-cap company if it falls within the S&P/ASX 50 Index, with stocks falling within the S&P/ASX 51 to 100 considered mid-cap companies. Furthermore, Zenith considers stocks that fall within the S&P/ASX 101 to 300 to be small-cap companies.

As at 31 May 2025, the Financials and Materials sectors combined represented a significant portion of the S&P/ASX 300 Accumulation Index, with the Financials sector accounting for approximately 34% and Materials approximately 18%. In addition, the top 10 stocks represented approximately 47% of the Index and the top 20 stocks represented approximately 61%.

### Sector risks

Funds within the 'Australian Shares – Large Companies' sector are exposed to the following broad risks:

**Market and economic risk:** A sustained downturn across the Australian equity market is a risk to the absolute performance of funds in the sub-asset class. Additionally, changes in economic, social, technological or political conditions, as well as market sentiment, could also lead to negative fund performance. This risk can be significantly reduced by investors adhering to a fund's prescribed investment timeframe.

**Concentration risk:** The S&P/ASX 300 Index is subject to a high level of concentration in particular stocks and sectors. For example, the largest 10 holdings currently represent approximately 45% of the index, whilst the two largest sectors, resources and financials, currently represent nearly 55% of the index.

**Specific security risk:** This is the risk associated with an individual security. The price of common shares in a company may be affected by unexpected changes in company operations

such as changes in management or the loss of a significant customer.

**Liquidity risk:** This is the risk that a security or asset cannot be traded promptly, due to insufficient trading volumes in the Australian equity market. When trading volumes are low, buyers/sellers can significantly impact the price of a security when entering or exiting a position.

**Style bias risk:** Australian equity managers employ different investment styles such as Growth, Value or Neutral (a combination of Value and Growth). Each style is conducive to certain market conditions. This risk can be significantly reduced by investors adhering to a fund's prescribed investment timeframe.

**Capacity risk:** High levels of funds under management (FUM) can present additional challenges to an Australian equity manager. High FUM has the potential to restrict a manager's ability to trade efficiently and/or be forced to disclose substantial shareholdings to the market (most common in smaller companies).

**Regulatory risk:** All investments carry the risk of being affected by changes to government policies, regulations and laws. Security prices in which funds may have exposure are also subject to certain risks arising from government intervention in the Australian equity market. Such regulation or intervention could adversely affect fund performance.

## Administration and operations

Responsible Entity	Yarra Funds Management Limited
--------------------	--------------------------------

## Zenith rating

### Report certification

Date of issue: 26 Jun 2025

Role	Analyst	Title
Analyst	Tom Goodrich	Senior Investment Analyst
Sector Lead	Quan Nguyen	Head of Equities

### Association & relationship

ASIC Regulatory Guide RG79.164 requires Research Houses to disclose certain associations or relationships that they may have with a product issuer. We may receive remuneration from an issuer or investment manager for subscription to our other research/ data services or the research/ data services of our related entities. Conflict management arrangements are in place where we or our related entities provide research services to the product issuer or financial advisory businesses who provide financial planning services to investors and are also associated entities of product issuers. This is in accordance with the Zenith Group's Conflict of Interests Policy. Further details in relation to our relationships and associations are available on request.



## Rating history

As At	Rating
26 Jun 2025	Recommended
27 Jun 2024	Recommended
29 Jun 2023	Approved
30 Jun 2022	Approved
24 Jun 2021	Approved
15 Mar 2021	Approved
18 Jun 2020	Approved

*Last 5 years only displayed. Longer histories available on request.*

In March 2021, Zenith implemented a new ratings methodology for products classified as Traditional Index. Any rating issued from this date forward for Traditional Index products only reflect this change in methodology, with the relevant Traditional Index ratings being Index Approved, Index Recommended and Index Highly Recommended. Ratings issued for Traditional Index products prior to March 2021 are retained for historical purposes in line with our regulatory requirements and were issued in line with Zenith's Fund Research Methodology. Further information in relation to Zenith's Traditional Index Research Methodology and Traditional Index Ratings can be found on the Zenith website.



## Disclaimer and disclosure

Zenith Investment Partners (ABN 27 103 132 672) is the holder of Australian Financial Services Licence 226872 and is authorised to provide general financial product advice. This Product Assessment Report (report) has been prepared by Zenith exclusively for Zenith clients and should not be relied on by any other person. Any advice or rating contained in this report is limited to General Advice for Wholesale clients only, based solely on the assessment of the investment merits of the financial product. This report is current as at the date of issue until it is updated, replaced or withdrawn and is subject to change at any time without notice in line with Zenith's regulatory guidelines. Zenith clients are advised to check the currency of reports and ratings via Zenith's website for updates and should also verify information in relation to the fund with the relevant Fund Manager. Any advice contained in this report has been prepared without taking into account the objectives, financial situation or needs of any specific person who may read it, including target markets of financial products, where applicable. It is not a specific recommendation to purchase, sell or hold the relevant product(s). Investors should seek their own independent financial or tax advice, obtain a copy of, and consider any relevant PDS or offer document and consider the appropriateness of this advice in light of their own objectives prior to making any investment decision. Zenith charges an upfront flat fee to the Product Issuer, Fund Manager or other related party to produce research on funds that conform to Zenith's Research Methodology. Zenith's fee and Analyst remuneration are not linked to the rating outcome in any way. Views expressed in Zenith reports accurately reflect the personal, professional, reasonable opinion of the Analyst who has prepared the report. Zenith may also receive a fee for other non-research related services such as subscription fees for Zenith's research services and/or for the provision of investment consultancy services. Conflicts management arrangements are in place where Zenith provides research services to financial advisory businesses who provide financial planning services to investors and are also associated entities of the product issuers, with any such conflicts of interest disclosed within reports as appropriate. Full details regarding such arrangements are outlined in [Zenith's Conflicts of Interest Policy](#).

Zenith's research process seeks to identify investment managers considered to be the 'best of breed' through a comprehensive, multi-dimensional selection process. Zenith utilises both quantitative and qualitative factors in its ratings models. Models maximise commonality across different asset classes while retaining flexibility for specialist asset classes and strategies. The selection process is rigorous in both its qualitative and quantitative analysis and each component is equally weighted. Zenith does not manage any proprietary assets and as such Zenith is able to choose investment managers with absolute independence and objectivity. More detailed information regarding Zenith's fund research methodology and Zenith's traditional index research methodology, coverage and ratings is available on Zenith's website at [Fund Research Methodology](#) and [Traditional Index Research Methodology](#).

This report is subject to copyright and may not be reproduced, modified or distributed without the consent of the copyright owner. The information contained in this report has been prepared in good faith and is believed to be reliable at the time it was prepared, however, no representation, warranty or undertaking is given or made in relation to the accuracy or completeness of the information presented in this report. Except for any liability which cannot be excluded, Zenith does not accept any liability, whether direct or indirect arising from the use of information contained in this report. Past performance is not an indication of future performance.

Third Party data may be sourced from Financial Express, Refinitiv, Bloomberg and/or MSCI. Third party data and content used in this document has not been independently verified by Zenith and Zenith provides no warranty, representation or responsibility to update this document. Third Party data is the intellectual property of that third party and must not be reproduced, stored or transmitted without their consent.

Full details regarding the methodology, ratings definitions and regulatory compliance are available at [Fund Research Regulatory Guidelines](#).

Zenith is not required to be licensed under New Zealand law or be registered on the FSPR. Zenith has not engaged or authorised any party to provide financial advice on its behalf to New Zealand investors.

Zenith ratings and research are prepared by Zenith and are not connected in any way to research and ratings prepared by any of our related entities.

This report refers to the Australian unit trust for the fund, and the fund and benchmark returns are all in AUD.

© 2025 Zenith Investment Partners. All rights reserved.

Zenith has charged Yarra Capital Management Group a fee to produce this report.